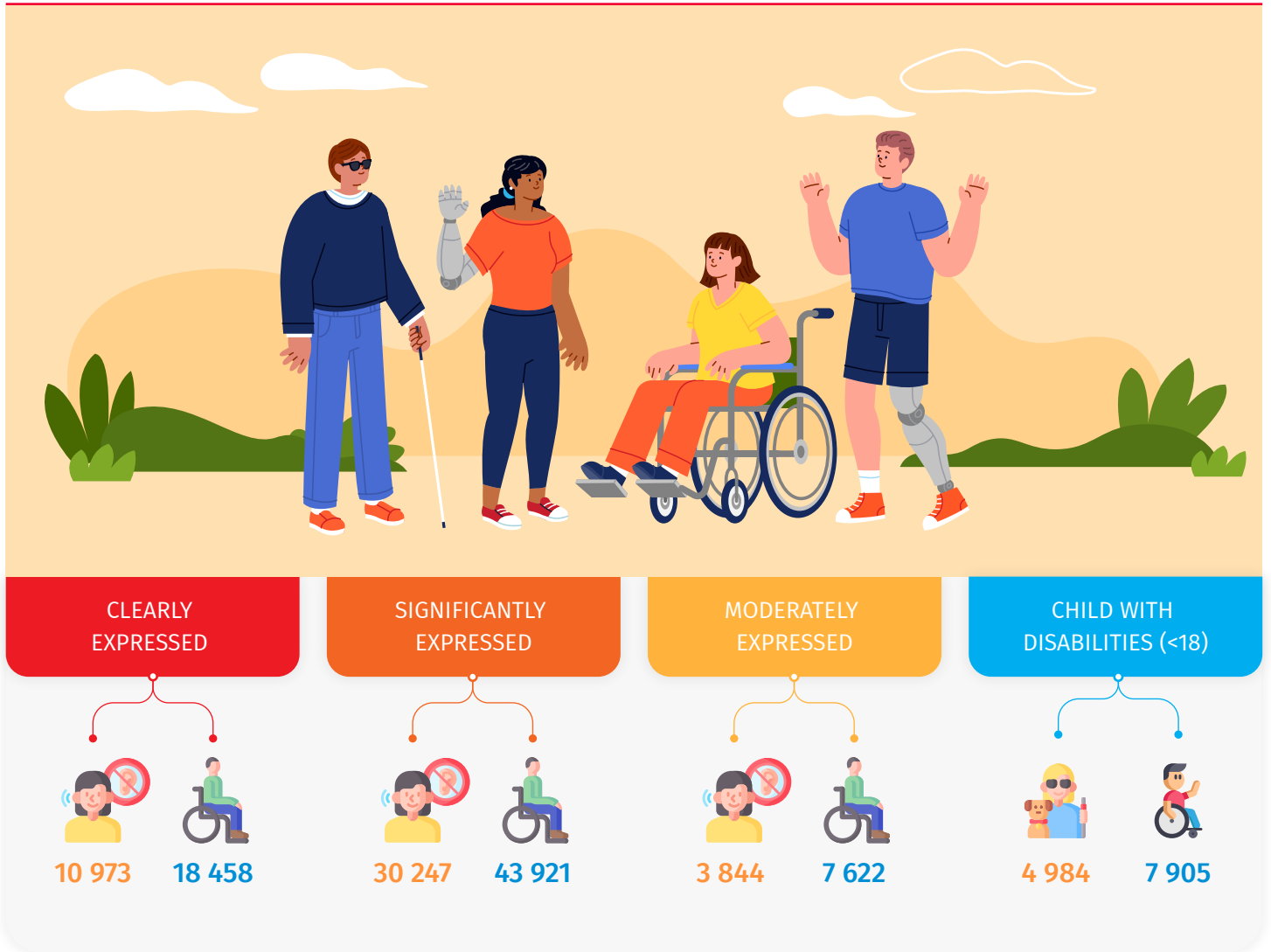


SOCIAL SECURITY

2021

THE NUMBER OF PERSONS WITH DISABILITIES RECEIVING THE SOCIAL PACKAGE, EXPRESSED ACCORDING TO QUALITY (PERSONS)



NUMBER OF INTERNALLY DISPLACED DISABILITY PERSONS RECEIVING SOCIAL PACKAGE BY MUNICIPALITIES (PERSONS)



6 535

NUMBER OF DISABILITY PERSONS, RECEIVING SUBSISTENCE ALLOWANCE (PERSONS)

FAMILY WITH DISABILITIES PERSONS



33 983

DISABILITIES PERSONS



39 128